

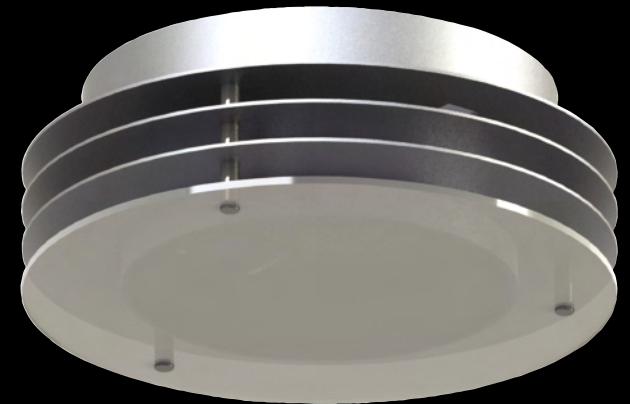
Surface mounted ambient fixture

A high power surface mounted ambient fixture for interior applications offering performance equivalent to 28W 2D or 2 x 26W TC-D luminaires with the option of an integral sensor and emergency pack.



- High power fixture
- Surface mounted with integral driver
- Integral emergency and sensor option

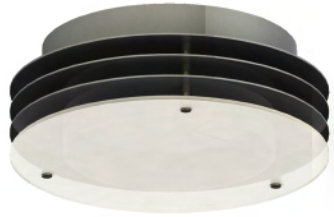
- Outputs up to 1697lm
- Up to 74.2lm/cW



Votan

Surface mounted ambient fixture

Integral non dimmable driver

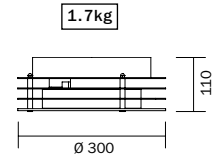


Finishes: MW / MS

Options: EMERGENCY (+E) MICROWAVE SENSOR (+M)

Beams: 110°



Light Engines: JT1-1500 / JT1-1950

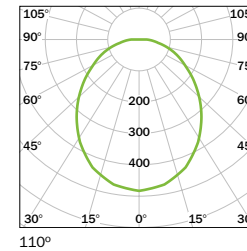


Order Codes:



e.g. VN-SM-SS/JT1-1500-80-40/110

* To special order minimum quantity

Product	Finish	Option	Light Engine-Lumens	Min CRI	Colour Temp	Beam
VN-SM	-MW -MS	+E +M	 /JT1-1500	-80	-40 -27* -30* -65*	/110
			 /JT1-1950	-80	-40 -27* -30* -65*	/110



Performance Data for VN-SM with each Light Engine Option

	 Jupiter 1500	 Jupiter 1950
	High Efficiency	High Output
Illuminance Comparable to	2 x 18W CFL	32W CFL
Light Engine Power	14.9W	21.7W
LED Lumens (L ₁₀₀)	1500lm	1950lm
Delivered Lumens (L ₁₀₀) @	110°	110°
2700K	1145lm	1488lm
3000K	1227lm	1595lm
4000K	1305lm	1697lm
VCCT		
Luminaire Power (85% efficient Driver @ 25°C ambient)	18W	26W
Luminaire Lumens per circuit Watt 2700K / 3000K / 4000K	65.1 / 69.8 / 74.2lm/cW	58.3 / 62.5 / 66.5lm/cW
Driver Table	Integral non dimmable driver	Integral non dimmable driver
Lifetime (L ₇₀ F ₁₀)	50,000hrs	50,000hrs
Lumen Maintenance Category	Cat 1 / Code 9	Cat 1 / Code 9