



Laser SM

Installation Instructions



IMPORTANT PLEASE READ BEFORE INSTALLATION

- Before commencing installation ensure the relevant mains supply has been safely isolated.
- Installation should be carried out in accordance with the latest relevant wiring regulations for the specific country/region.
- Installation should be carried out by a qualified electrician.
- Ensure all electrical connections are tight with no loose strands, including factory made connections.

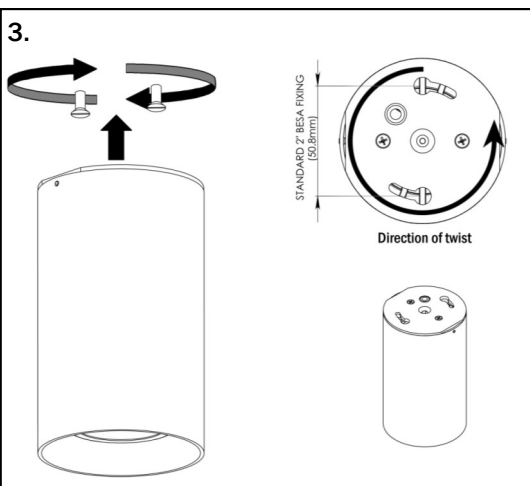
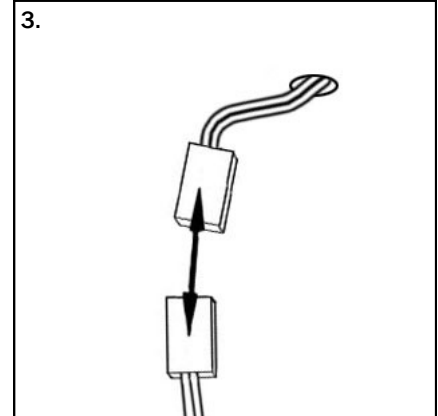
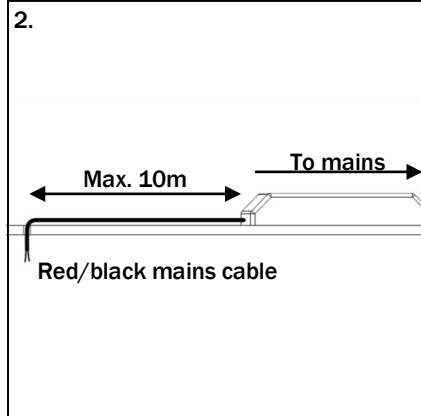
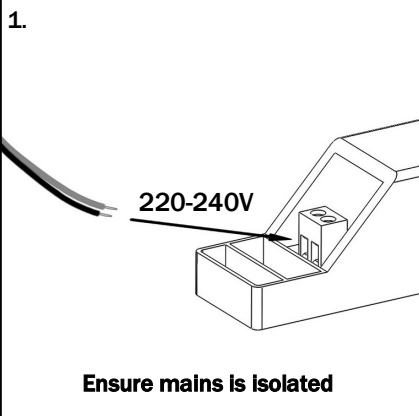
WARNINGS

- Use only with the approved driver for this product.
- This luminaire is for indoor use only.
- **IMPORTANT** The LED driver must not be covered by ceiling insulation material; this will reduce the units operational lifetime, invalidate the guarantee and may cause a risk of fire.

This install manual covers the following products:



LR-SM-MW/xxx-
xxx-xx-xx/xx



For screwing directly to ceiling:

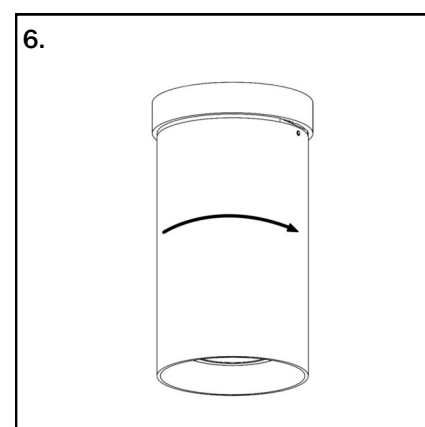
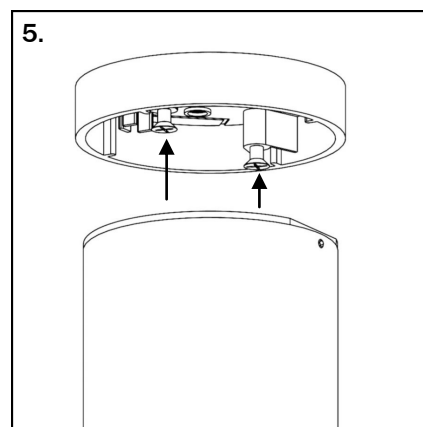
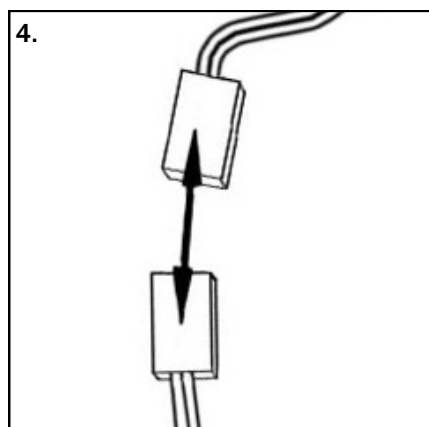
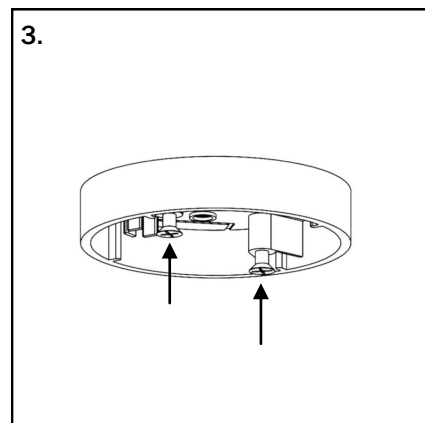
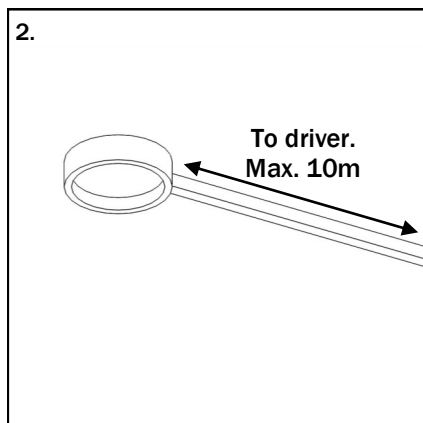
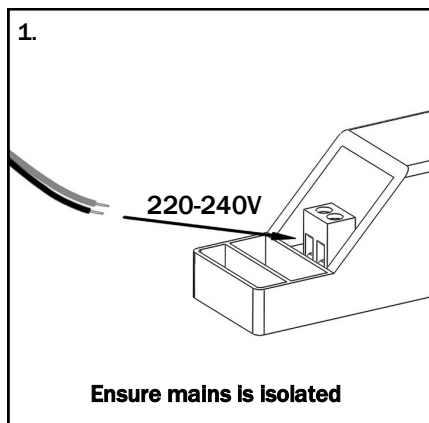
- Connect LED driver to mains
- Locate LED driver up to 10m away from fitting and feed connector through ceiling.
- Connect luminaire to LED driver.
- Locate appropriate fixing screws at 2"/50.8mm centres. Do not tighten fully, however there should be sufficient friction between the screw heads and the keyhole slots to hold the fixture in position.
- Use a clockwise twist to secure the luminaire to the screws.
- Tighten screws if necessary.

Photonstar LED Ltd.
Unit 8, Westlink,
Belbins Business Park
Romsey
Hampshire
SO51 7JF
UK

Tel: 0845 519 7717
Email: info@photonstarled.co.uk
Web: www.photonstarlighting.com



PLEASE READ THESE INSTRUCTIONS CAREFULLY BEFORE INSTALLATION
PLEASE RETAIN INSTRUCTIONS FOR FUTURE REFERENCE



For conduit (BESA) box with 2"/50.8mm centres:

- Connect driver to mains.
- House LED driver up to 10m from fitting and feed wire through conduit to conduit box.
- Locate mounting screws in conduit box
- Connect the luminaire to the LED driver
- Secure the luminaire to the adaptor plate using the two screws and twist clockwise to lock into place.
- Tighten if necessary.

Photonstar LED Ltd.
Unit 8, Westlink,
Belbins Business Park
Romsey
Hampshire
SO51 7JF
UK

Tel: 0845 519 7717
Email: info@photonstarled.co.uk
Web: www.photonstarlighting.com



P2 of 2
Revision: 1.12/04/11