

Tegen

Track Mount Spotlight

V20180314

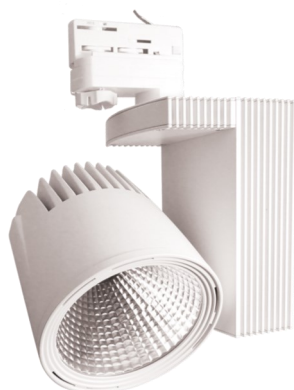


TG3C
Low Glare Track Mount
Spotlight

- ✓ Available in fixed white and ChromaWhite2.0™ colour tuneable options
- ✓ 355° rotation, 220° tilt
- ✓ Low glare high performance specular reflector
- ✓ Excellent efficacy of up to 125 luminaire lumens per circuit Watt
- ✓ Up to 3548 delivered lumens
- ✓ Dimmable versions available

Tegen

Track Mount Spot



Overview:

- ✓ 355° rotation, 220° tilt
- ✓ Low glare high performance specular reflector
- ✓ Efficacy of up to 125 luminaire lumens per circuit Watt
- ✓ Up to 3548 delivered lumens
- ✓ DMX control option (DMX addresses will be pre-set at factory)

Finish(es): Matt White (MW)

Option(s): Non-Self Test Emergency (-E),
Self Test & DALI Addressable Emergency (-D)

NB (Emergency Options):
Options not available for ChromaWhite2.0™ light engines, please use standalone emergency luminaires.
Adjustable versions will be mechanically locked at factory.
For emergency BLF %, please see our Emergency Pack Data Sheets.

Optic Options:

Type	Angle	Code	LOR	Notes
Reflector	10°	/NS	90	1, 2
Reflector	29°	/NF	90	1, 2
Reflector	47°	/WF	90	1, 2

NB (Optics):
Beam angle is measured half value.
1 is Peregrine light engines only, 2 is ChromaWhite2.0™ light engines only.

Light Engines:

Name	Code	Performance
Peregrine 1 3000	/PG1-3000	See Light Engine Data Sheet
Peregrine 1 4000	/PG1-4000	See Light Engine Data Sheet
Circadian	/SCT-2000	See Light Engine Data Sheet
CircadianMAX ColourMAX	/SCP-2000	See Light Engine Data Sheet

NB (Light Engines):
Performance may vary depending upon luminaire bezel choice and accessory.
All figures +/- 10% and specified at 25 °C ambient unless stated.
CRI shift at 6000 hours remains within 3 points of the rated CRI.

Order Codes:

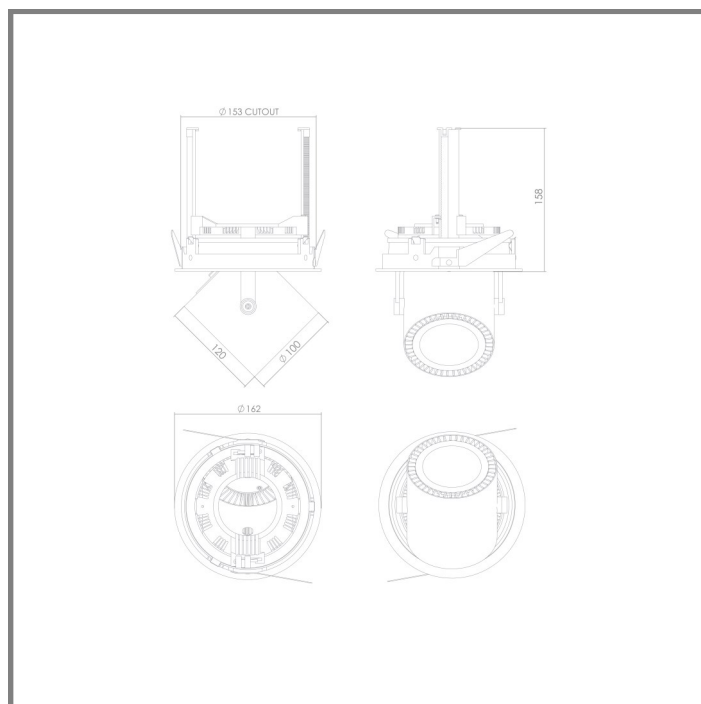
e.g. TG3CMW/PG1-3000-840/WF/AND

Product	Finish	Light Engine—Lumens	Photometric Code	Beam	Drivers	Options
TG3C	MW	/PG1-3000	-827 -830 -840	/NS /NF /WF	/AND /ATD /A10 /ADL /ODV	-E -D
		/PG1-4000	-827 -830 -840	/NS /NF /WF	/AND /ATD /A10 /ADL /ODV	-E -D
		/SCT-2000	-VCT	/NS /NF /WF	/DX2	
		/SCP-2000	-CPR	/NS /NF /WF	/DP2	

NB: (Drivers)
Recommended driver, Power factor >0.9, see driver data sheets for full data.
Please check with the PhotonStar™ sales team for compatible dimmers.
Only use shielded CAT6e cable with DMX drivers/controllers.
ChromaWhite2.0™ DMX controllers require a low voltage PSU.

Technical Drawing:

Weight: 2350g



NB (Technical Drawing):
All dimensions in mm. Weight excludes driver.

Peregrine

Very High Output, High Efficiency Replacement for Metal Halide/ QL



All data is at colour temperature 4000K, CRI Ra80 (photometric code: 840).

Also available as 'Standard' in 3000K, CRI Ra80 (photometric code: 830); and 2700K, CRI Ra80 (photometric code: 827).

'Special Order' also available in 2700K, Ra90; 3000K, Ra90; 4000K, Ra90. Contact our sales team for more information.


V20180314

Performance Data:		Peregrine 3000	Peregrine 4000	Peregrine 5000	Peregrine 6000	Peregrine 8000
Description						
Order Code		PG1-3000	PG1-4000	PG1-5000	PG1-6000	PG1-8000
Equivalence						
Light Engine Power (W)		16.6W	23.6W	34.2W	34.5W	49.6W
Source Lumens (lm)		2895 lm	3942 lm	5176 lm	5707 lm	7549 lm
CRI		80	80	80	80	80
CCT (K)		4000K	4000K	4000K	4000K	4000K
Source Efficiency (lm/W)		175 lm/W	167 lm/W	151 lm/W	165 lm/W	152 lm/W
Number of Channels		1	1	1	1	1
Voltage (V)		33.1V	33.7V	34.2V	49.3V	49.6V
Current (mA)		500mA	700mA	1000mA	700mA	1000mA
Optic		Diffuse / Reflector	Diffuse / Reflector	Diffuse / Reflector	Diffuse / Reflector	Diffuse / Reflector
Beam Angle Options & (Code)*		60° (WF)	60° (WF)	60° (WF)	60° (WF)	60° (WF)
		-	-	-	-	-
		-	-	-	-	-
		-	-	-	-	-
		-	-	-	-	-
Board Manufacturer		Citizen	Citizen	Citizen	Citizen	Citizen
LED Chip Type		Citizen CLU048-1212C4	Citizen CLU048-1212C4	Citizen CLU048-1212C4	Citizen CLU048-1818C4	Citizen CLU048-1818C4
Initial/Maintained SDCM		<3 / <3	<3 / <3	<3 / <3	<3 / <3	<3 / <3
Rated Life (L70F10)		50,000 hrs	50,000 hrs	50,000 hrs	50,000 hrs	50,000 hrs
Lumen Maint. Cat.		Cat 1 / Code 9	Cat 1 / Code 9	Cat 1 / Code 9	Cat 1 / Code 9	Cat 1 / Code 9
Order Code Example		NPLGM/WPG1-3000-840/WF/AND	NPLGM/WPG1-4000-840/WF/AND	NPLGM/WPG1-5000-840/WF/AND	NPLGM/WPG1-6000-840/WF/AND	NPLGM/WPG1-8000-840/WF/AND
Luminaire Example		NPLG 840 60deg	NPLG 840 60deg	NPLG 840 60deg	NPLG 840 60deg	NPLG 840 60deg
System Power (SysW)**		20.8W	29.5W	42.8W	40.6W	58.4W
Delivered Lumens (llm)		2490 llm	3390 llm	4451 llm	4908 llm	6492 llm
Delivered Efficacy (llm/cW)		120 llm/cW	115 llm/cW	104 llm/cW	121 llm/cW	111 llm/cW
Driver & Controller Options * (Code)**		None (/ODV)	None (/ODV)	None (/ODV)	None (/ODV)	None (/ODV)
		Non-Dim (/AND)	Non-Dim (/AND)	Non-Dim (/AND)	Non-Dim (/AND)	Non-Dim (/AND)
		Trailing Edge Dim (/ATD) †	Trailing Edge Dim (/ATD) †	Trailing Edge Dim (/ATD) †	Trailing Edge Dim (/ATD) †	Trailing Edge Dim (/ATD) †
		1-10V Dim (/A10) †	1-10V Dim (/A10) †	1-10V Dim (/A10) †	-	-
		DALI (/ADL)	DALI (/ADL)	DALI (/ADL)	-	-
		-	-	-	-	-
		-	-	-	-	-
Emergency Output factor EOFI / BLF		15.00%	10.57%	7.60%	6.57%	4.60%

NB: All figures +/- 10% and specified at 25°C ambient unless stated. Data in grey is indicative.
CRI shift at 6000 hours remains within 3 points of the rated CRI.
Power factor > 0.9, see driver data sheet for full data.

* Measured, half value angle (/code). ** with recommended driver.
† Please check with PhotonStar sales team for compatible dimmers.
Only use shielded CAT6e cable. ChromaWhite2.0™ light engine controllers require low voltage PSU.

Lumen Adjustment Factor for CCT Across Tuning Range:

	Photometric Code:	827	830	840	865	927	930	940	965	-
	Conversion Factor:	0.93	0.97	1.00	-	-	-	-	-	-

Available in the Following Luminaires:

✓ NemesisPLUS



✓ Kowan



✓ Taflun



✓ Tegen



NB: Kowan, Taflun, Tegen are only available with the Peregrine 3000 & Peregrine 4000

Colour Tuneable Modules



V20180314

All data is at colour temperature 6500K, CRI Ra90
 These light engines have a tuneable range:
 2700K–6500K (ChromaWhite2.0™ Circadian) | 1800K–7000K (ChromaWhite2.0™ CircadianMAX ColourMAX)
 Contact our sales team for more information on melanopic lumens and CRI.

Performance Data:						
Description		Circadian	CircadianMAX ColourMAX			
Order Code		2700K-6500K SCT-2000-VCT	1800K-7000K + Colours SCP-2000-CPR			
Equivalence						
Light Engine Power (W)		20.2W	22.2W			
Source Lumens (lm)		2505 lm	2273 lm			
CRI		90	90			
CCT (K)		6500K	6500K			
Source Efficiency (lm/W)		124 lm/W	102 lm/W			
Number of Channels		2	5			
Voltage (V)		20.3V - 23.2V	10.5V - 23.2V			
Current (mA)		1000mA	700mA			
Optic		Diffuse / Reflector	Diffuse / Reflector			
Beam Angle Options & (Code)*		60° (WF)	60° (WF)			
		-	-			
		-	-			
		-	-			
		-	-			
Board Manufacturer		PhotonStar™	PhotonStar™			
LED Chip Type		Lumileds Luxeon Z	Lumileds Luxeon Z			
Initial/Maintained SDCM		<3 / <3	<3 / <3			
Rated Life (L70F10)		50,000 hrs	50,000 hrs			
Lumen Maint. Cat.		Cat 1 / Code 9	Cat 1 / Code 9			
Order Code Example		NMLGM W/SCT-2000-VCT/WF/DX2	NMLGM W/SCP-2000-CPR/WF/DP2			
Luminaire Example		NMLG VCT 60deg	NMLG CPR 60deg			
System Power (SysW)**		25.2W	27.8W			
Delivered Lumens (llm)		2154 llm	1955 llm			
Delivered Efficacy (llm/cW)		86 llm/cW	70 llm/cW			
Driver & Controller Options * (Code)**		DMX (/DX2)	DMX (/DP2)			
		-	-			
		-	-			
		-	-			
		-	-			
		-	-			
		-	-			
Emergency Output factor EOFI / BLF		N/A	N/A			

NB: All figures +/- 10% and specified at 25°C ambient unless stated. Data in grey is indicative.
 CRI shift at 6000 hours remains within 3 points of the rated CRI.
 Power factor > 0.9, see driver data sheet for full data.

* Measured, half value angle (/code). ** with recommended driver.
 † Please check with PhotonStar sales team for compatible dimmers.
 # Only use shielded CAT6e cable. ChromaWhite2.0™ light engine controllers require low voltage PSU.

Lumen Adjustment Factor for CCT Across Tuning Range:

	Colour Temperature:	1800K	2200K	2700K	3000K	4000K	5000K	5500K	6500K	7000K
	Conversion Factor:	-	-	0.69	0.71	0.77	0.87	0.92	1.00	-
	Colour Temperature:	1800K	2200K	2700K	3000K	4000K	5000K	5500K	6500K	7000K
	Conversion Factor:	0.68	-	0.75	0.76	0.83	0.90	0.93	1.00	1.05

Available in the Following Luminaires:

